

U.S. Government Running Portfolio Assignment

You will be asked to create a running portfolio this term. This body of work shows me your application of knowledge and how you relate critical thinking to this class. Your portfolio assignments are all applicable to the subject of American Government and they will help you as you go through the term. You do not need to procrastinate. This portfolio is in addition to the regular class work and assignments that we cover every day in my class. The assignment is due on the last Monday at the end of the term.

American Government teachers selected entries in this portfolio and they show us your abilities for:

1. Processing information through independent learning.
2. Executing critical thinking skills and improving your communication skills through certain writing assignments.
3. To conduct research on certain issues by using primary sources.
4. Analyzing of data and reporting your findings. Remember that this is a social science so we look at the behavior and opinions of others.
5. Your creative skills in the area of visual aids and technology.
6. Application of civic duties to make you a well informed citizen.

Portfolio Guidelines:

You will receive 50 points for completing the following:

- Your portfolio will need to be in a 1" three ring binder. This excludes posters, visual aids and video (email link).
- Must have a table of contents.
- Each assignment must be completed and turned in sheet protectors.
- The portfolio on the appropriate day at the beginning of class.
- Any report or essay must be typed. The format is 12 fonts, New Times Roman and double-spaced.

Portfolio Assignments:

A. Citizenship Quiz/Introduction: _____/25 pts.

For the first assignment you will be required to write a brief introduction about yourself. I want you to tell me where you are from, what your ambitions are and what party you align yourself with. I really want you to think about this and tell why you identify yourself to that political party. Some examples would be I am a Republican because I believe that government spending and taxes are un-American. Or I am a Democrat because I think that the government needs to be a tool to help those less fortunate.

The second part of this will include a quiz on citizenship on the very first day of class. You will take this quiz in class and we will go over the answers on the second day. After you complete this, you need to save it and put it in the portfolio.

B. Interdisciplinary Project: _____/25 pts.

Show me how American Government is applicable in other places than my classroom. I want you to find a piece of work or activity that you do in another class that relates to Government. You must submit one sample from any of the following subjects: Math, Science, English, Art, P.E., Foreign Language, or from an elective other than Current Events.

U.S. Government Running Portfolio Assignment

C. Visit Local Government: _____/60 pts.

You will need to visit an element of local government here in Sylacauga. You can either go to a Board of Education meeting or a meeting of the City Council. You will have to submit a form that I provide and a copy of agendas and notes that are passed out at the event. You need to have a member of the Board or Council sign your sheet in order to submit it.

D. Political Survey PowerPoint: _____/75 pts.

Each person is responsible for administering 25 surveys. You *must* have a written record of each individual's answers to the survey questions on the official survey form. 25 surveys will be used to construct a "straw poll." This is a very unscientific poll designed to use any sample of the population that you wish. The next requirement is for you to create a PowerPoint that will display the results of your work. (This assignment has changed, you do not have to graph out your results)

E. Letter to Congressman: _____/15 pts.

You need to write your Congressman in Washington about some key issue that relates to you here at home. It must tell him how you feel about some issue like healthcare reform, the raising of taxes, Social Security or education reform. This letter should be three paragraphs.

F. Constitutional Scavenger hunt Worksheet: _____/ 50 pts.

You will be given a scavenger hunt worksheet that covers the Constitution of the United States. This primary source is located in the back of the textbook and all answers must be in complete sentences and cited. The worksheet has instructions on the citation procedures.

G. Principles poster: _____/ 50 pts.

Our Constitution lays that foundation that government is based on. There are six very important principles that are present throughout this document. These principles are separation of powers, checks and balances, federalism, judicial review, limited government, and Popular Sovereignty. You have to create a poster that relates three of the six together in our country. Use symbols, businesses, government buildings or anything that relate these three principles. The principles also have to be on the poster to tell me which three you used. Do your best work on this visual. You can choose to create all 6 posters using Glogster and then print out and email me the poster.

H. Create a political ad video project: _____/ 50 points

The final project of your portfolio will help accent the creative juices in you. You can use Animoto to create your political ads. The ad should be 30 seconds in length. You can use previous candidates, current candidates, and/or future candidates. Email the completed video to me.

Total Points: _____/400 points possible

U.S. Government Running Portfolio Assignment

Citizenship Test

1. WHAT ARE THE COLORS OF OUR FLAG?
2. HOW MANY STARS ARE THERE IN OUR FLAG?
3. WHAT COLOR ARE THE STARS ON OUR FLAG?
4. WHAT DO THE STARS ON THE FLAG MEAN?
5. HOW MANY STRIPES ARE THERE IN THE FLAG?
6. WHAT COLOR ARE THE STRIPES?
7. WHAT DO THE STRIPES ON THE FLAG MEAN?
8. HOW MANY STATES ARE THERE IN THE UNION?
9. WHAT IS THE 4TH OF JULY?
10. WHAT IS THE DATE, OF INDEPENDENCE DAY?
11. INDEPENDENCE FROM WHOM?
12. WHAT COUNTRY DID WE FIGHT DURING THE REVOLUTIONARY WAR?
13. WHO WAS THE FIRST PRESIDENT OF THE UNITED STATES?
14. WHO IS THE PRESIDENT OF THE UNITED STATES TODAY?
15. WHO IS THE VICE-PRESIDENT OF THE UNITED STATES TODAY?
16. WHO ELECTS THE PRESIDENT OF THE UNITED STATES?
17. WHO BECOMES PRESIDENT OF THE UNITED STATES IF THE PRESIDENT SHOULD DIE?
18. FOR HOW LONG DO WE ELECT THE PRESIDENT?
19. WHAT IS THE CONSTITUTION?
20. CAN THE CONSTITUTION BE CHANGED?
21. WHAT DO WE CALL A CHANGE TO THE CONSTITUTION?
22. HOW MANY CHANGES OR AMENDMENTS ARE THERE TO THE CONSTITUTION?
23. HOW MANY BRANCHES ARE THERE IN OUR GOVERNMENT?
24. WHAT ARE THE THREE BRANCHES OF OUR GOVERNMENT?
25. WHAT IS THE LEGISLATIVE BRANCH OF OUR GOVERNMENT?
26. WHO MAKES THE LAWS IN THE UNITED STATES?
27. WHAT IS CONGRESS?
28. WHAT ARE THE DUTIES OF CONGRESS?
29. WHO ELECTS CONGRESS?
30. HOW MANY SENATORS ARE THERE IN CONGRESS?
31. CAN YOU NAME THE TWO SENATORS FROM YOUR STATE?
32. FOR HOW LONG DO WE ELECT EACH SENATOR?
33. HOW MANY REPRESENTATIVES ARE THERE IN CONGRESS?
34. FOR HOW LONG DO WE ELECT THE REPRESENTATIVES?
35. WHAT IS THE EXECUTIVE BRANCH OF OUR GOVERNMENT?
36. WHAT IS THE JUDICIARY BRANCH OF OUR GOVERNMENT?
37. WHAT ARE THE DUTIES OF THE SUPREME COURT?
38. WHAT IS THE SUPREME LAW OF THE UNITED STATES?
39. WHAT IS THE BILL OF RIGHTS?
40. WHAT IS THE CAPITAL OF YOUR STATE?
41. WHO IS THE CURRENT GOVERNOR OF YOUR STATE?
42. WHO BECOMES PRESIDENT OF THE U.S.A. IF THE PRESIDENT AND THE VICE-PRESIDENT SHOULD DIE?
43. WHO IS THE CHIEF JUSTICE OF THE SUPREME COURT?
44. CAN YOU NAME THE THIRTEEN ORIGINAL STATES?
45. WHO SAID, "GIVE ME LIBERTY OR GIVE ME DEATH"?
46. WHICH COUNTRIES WERE OUR ENEMIES DURING WORLD WAR II?
47. WHAT ARE THE 49TH AND 50TH STATES OF THE UNION?
48. HOW MANY TERMS CAN A PRESIDENT SERVE?
49. WHO WAS MARTIN LUTHER KING, JR.?
50. WHO IS THE HEAD OF YOUR LOCAL GOVERNMENT?

U.S. Government Running Portfolio Assignment

51. ACCORDING TO THE CONSTITUTION, A PERSON MUST MEET CERTAIN REQUIREMENTS IN ORDER TO BE ELIGIBLE TO BECOME PRESIDENT. NAME ONE OF THESE REQUIREMENTS.
52. WHY ARE THERE 100 SENATORS IN THE SENATE?
53. WHO SELECTS THE SUPREME COURT JUSTICES?
54. HOW MANY SUPREME COURT JUSTICES ARE THERE?
55. WHY DID THE PILGRIMS COME TO AMERICA?
56. WHAT IS THE HEAD EXECUTIVE OF A STATE GOVERNMENT CALLED?
57. WHAT IS THE HEAD EXECUTIVE OF A CITY GOVERNMENT CALLED?
58. WHAT HOLIDAY WAS CELEBRATED FOR THE FIRST TIME BY THE AMERICAN COLONISTS?
59. WHO WAS THE MAIN WRITER OF THE DECLARATION OF INDEPENDENCE?
60. WHEN WAS THE DECLARATION OF INDEPENDENCE ADOPTED?
61. WHAT IS THE BASIC BELIEF OF THE DECLARATION OF INDEPENDENCE?
62. WHAT IS THE NATIONAL ANTHEM OF THE UNITED STATES?
63. WHO WROTE THE STAR-SPANGLED BANNER?
64. WHERE DOES FREEDOM OF SPEECH COME FROM?
65. WHAT IS THE MINIMUM VOTING AGE IN THE UNITED STATES?
66. WHO SIGNS BILLS INTO LAW?
67. WHAT IS THE HIGHEST COURT IN THE UNITED STATES?
68. WHO WAS THE PRESIDENT DURING THE CIVIL WAR?
69. WHAT DID THE EMANCIPATION PROCLAMATION DO?
70. WHAT SPECIAL GROUP ADVISES THE PRESIDENT?
71. WHICH PRESIDENT IS CALLED THE "FATHER OF OUR COUNTRY"?
72. WHAT IMMIGRATION AND NATURALIZATION SERVICE FORM IS USED TO APPLY TO BECOME A NATURALIZED CITIZEN?
73. WHO HELPED THE PILGRIMS IN AMERICA?
74. WHAT IS THE NAME OF THE SHIP THAT BROUGHT THE PILGRIMS TO AMERICA?
75. WHAT WERE THE 13 ORIGINAL STATES OF THE UNITED STATES CALLED?
76. NAME 3 RIGHTS OR FREEDOMS GUARANTEED BY THE BILL OF RIGHTS?
77. WHO HAS THE POWER TO DECLARE WAR?
78. WHAT KIND OF GOVERNMENT DOES THE UNITED STATES HAVE?
79. WHICH PRESIDENT FREED THE SLAVES?
80. IN WHAT YEAR WAS THE CONSTITUTION WRITTEN?
81. WHAT ARE THE FIRST 10 AMENDMENTS TO THE CONSTITUTION CALLED?
82. NAME ONE PURPOSE OF THE UNITED NATIONS.
83. WHERE DOES CONGRESS MEET?
84. WHOSE RIGHTS ARE GUARANTEED BY THE CONSTITUTION AND THE BILL OF RIGHTS?
85. WHAT IS THE INTRODUCTION TO THE CONSTITUTION CALLED?
86. NAME ONE BENEFIT OF BEING A CITIZEN OF THE UNITED STATES.
87. WHAT IS THE MOST IMPORTANT RIGHT GRANTED TO U.S. CITIZENS?
88. WHAT IS THE UNITED STATES CAPITOL?
89. WHAT IS THE WHITE HOUSE?
90. WHERE IS THE WHITE HOUSE LOCATED?
91. WHAT IS THE NAME OF THE PRESIDENT'S OFFICIAL HOME?
92. NAME ONE RIGHT GUARANTEED BY THE FIRST AMENDMENT.
93. WHO IS THE COMMANDER IN CHIEF OF THE U.S. MILITARY?
94. WHICH PRESIDENT WAS THE FIRST COMMANDER IN CHIEF OF THE U.S. MILITARY?
95. IN WHAT MONTH DO WE VOTE FOR THE PRESIDENT?
96. IN WHAT MONTH IS THE NEW PRESIDENT INAUGURATED?
97. HOW MANY TIMES MAY A SENATOR BE RE-ELECTED?
98. HOW MANY TIMES MAY A CONGRESSMAN BE RE-ELECTED?
99. WHAT ARE THE 2 MAJOR POLITICAL PARTIES IN THE U.S. TODAY?
100. HOW MANY STATES ARE THERE IN THE UNITED STATES?

U.S. Government Running Portfolio Assignment

SHS American Government Visiting Local Government

Standards Covered for this assignment:

- Describe specific functions, organization, and purposes of state and local governments.
- Contrast rights and responsibilities of citizens in a representative democracy.

Assignment:

You are required to visit and attend an organized meeting of local government. We have two entities here in Sylacauga that meets regularly. The first is the Sylacauga Board of Education. They meet the last week of every month on Tuesday or Thursday 5:00 or 5:30 pm. The other is the Sylacauga City Council. They meet the first Wednesday at 9:00 am and third Tuesday of each month at 6:00 pm. You will have to sit through the entire meeting, bring a copy of the agenda, and complete this form for full credit. You also have to get one signature of a member of either group. This assignment is worth points in the running portfolio for this class.

Name: _____ Date: _____

Type of Meeting (B.O.E./City Council)

Main Topics of Discussion:

Your thoughts on the meeting:

Member Signature: _____

U.S. Government Running Portfolio Assignment

US Government Public Straw Poll Project PowerPoint

SURVEYS: Each person is responsible for administering 16 surveys. You *must* have a written record of each individual's answers to the survey questions on the official survey form. These 16 surveys will be used to construct a "straw poll." This is a very unscientific poll designed to use any sample of the population that you wish. The other 16 surveys will be used for a "quota sample." The quota sample is based on the makeup of the Alabama population using numbers from the 2010 US Census of Alabama. This makeup is explained below. **Use the following ethnic/age/gender backgrounds as a guide when you provide a breakdown of your results.**

Ethnic groups:	White 68.5% (10 people)	A TOTAL OF 16 PEOPLE
	Black 26.2% (3 people)	
	Hispanic 3.9% (2 people)	
Asian and American Indian 1.7% (1 person)		
Age structure:	0-19 years: 28% (5 people)	
	20-54 years: 50% (8 people)	
	55 and over: 22% (3 people)	
Gender:	Female: 51% (9 people)	
	Male: 49% (7 people)	

PRESENTATION OF THE DATA: The information that you gather in the surveys is to be presented in the form of charts and/or graphs on a PowerPoint presentation. This is just one of the many ways that you can choose to compile your data. Once the data is input into the program, you can decide what type of graph that you want to use. Each question should have a chart relating to each answer, with the data compiled from that question. In other words, if the question that you are asking has 5 possible answers, you will have a total of 25 charts. **I know that there will be a lot of questions over this project. Bear with me when I try and answer your questions...and if I still don't make it clear to you...please LET ME KNOW!!! Only questions 1-20 will be graphed.**

The questions to ask are on the following pages...please remember that you MUST have a written record of each survey participant(s). For the quota sample, you will also want to have written on the answer sheet what gender, age group, and ethnicity they fall under. Actually, on ALL of them, you should have that written on it since you will be using those classifications to create your charts.

U.S. Government Running Portfolio Assignment

1. Which of the following best reflects your attitude towards the job President Obama has done thus far with the U.S. economy? **(Strongly approve/Approve/Ambivalent/ Disapprove/Strongly disapprove)**
2. Do you approve of the new government healthcare system that is referred to as “Obamacare”? **(Strongly approve/Approve/Ambivalent/ Disapprove/Strongly disapprove)**
3. How supportive would you be of creating a citizenship plan for people that have illegally immigrated to the U.S? **(strongly support/support/ambivalent/oppose/strongly oppose)**
4. Would you be willing to pay a national sales tax as part of a constitutional balanced budget amendment? **(strongly support/support/ambivalent/oppose/strongly oppose)**
5. Do you believe it is ok for President Obama to maintain an “assassination list” of potential terrorists, including U.S. citizens? **(Strongly approve/Approve/Ambivalent/ Disapprove/Strongly disapprove)**
6. Do you support the increased efforts to control rifles and handguns? **(strongly support/support/oppose/strongly oppose)**
7. Does the U.S. need to play the role of “policeman” in the world to maintain peace? **(strongly agree/agree/ambivalent/disagree/strongly disagree)**
8. Is the U.S. justified to use armed drones to fly into other countries to kill people the government suspects of supporting terrorism? **(Strongly justified/justified/ambivalent/unjustified/strongly unjustified)**
9. How important do you feel the role of family is in shaping American society today? **(not important/somewhat important/important/very important/ extremely important)**
10. How important do you feel the role is of religion in shaping American society today? **(not important/somewhat important/important/very important/ extremely important)**
11. Are you aware of the role the Federal Reserve plays in our economy? **(Highly aware/slightly aware/Ambivalent/not aware)**
12. Which of the following best reflects your attitude towards the American government’s handling of terrorists? **(Strongly approve/Approve/Ambivalent/ Disapprove/Strongly disapprove)**
13. Scientists say we have approximately 50-100 years of oil left before we start seeing sharp reductions in supply. Should the government implement new taxes to slow down the use of fossil fuels? **((Strongly approve/Approve/Ambivalent/ Disapprove/Strongly disapprove)**
14. Which of the following statements best reflects your attitude toward abortion? **(I am pro-life/I am pro-life with some exceptions/I am pro-choice with some exceptions/I am pro-choice)**
15. Do you believe it is fair for rich people to pay a higher percentage rate of taxes than lower income people? **(strongly support/support/ambivalent/oppose/ strongly oppose)**
16. Would you support cuts to Social Security and Medicare to balance the budget? **(strongly support/support/ambivalent/oppose/strongly oppose)**
17. How much would you support a raise in the national income tax to strengthen the Social Security program? **(strongly support/support/ambivalent/oppose/ strongly oppose)**
18. Which of the following best reflects your views towards states exercising a variety of “state rights” on marijuana? **(strongly agree/agree/ambivalent/disagree/strongly disagree)**
19. How should the issue of gay marriage be decided? **(federal legislation/court interpretations of state & U.S. Constitution/ various state legislation/vote by citizens)**
20. Which of the following best describes your self-professed political affiliation? **(Democrat/Republican/Libertarian/Green/Independent/No affiliation)**
21. Name two senators that are not from the state of Alabama.
22. In what document would you find the phrase “all men are created equal”?
24. If the president and the vice-president were to die at the same time, according to the Constitution, who would become president?
25. In your opinion, what is the most serious problem facing America today?

U.S. Government Running Portfolio Assignment

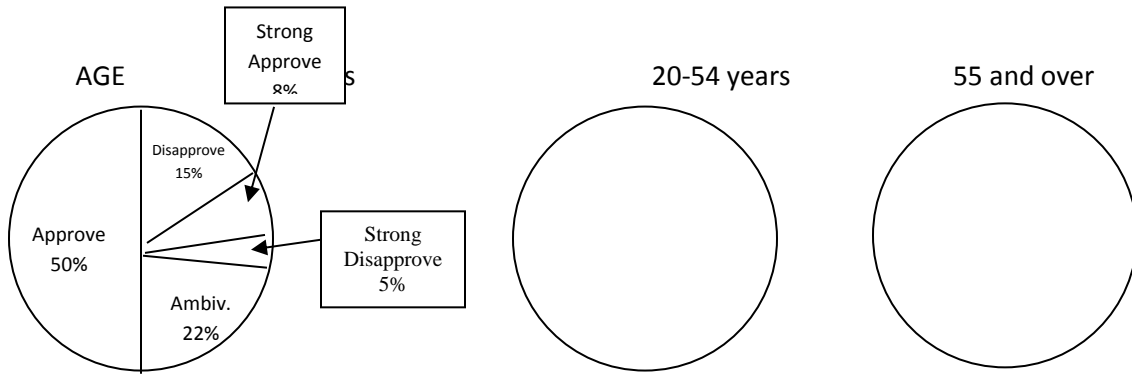
	Name	Signature	Answer #25
1			
2			
3			
4			
5			
6			
7			
8			
9			
10			
11			
12			
13			
14			
15			
16			
17			
18			
19			
20			
21			
22			
23			
24			
25			

U.S. Government Running Portfolio Assignment

Public Opinion Poll EXAMPLE

QUESTION 1

Which of the following best reflects your attitude towards the job that President Obama has done thus far?

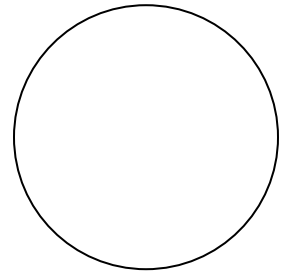
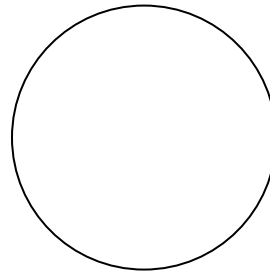
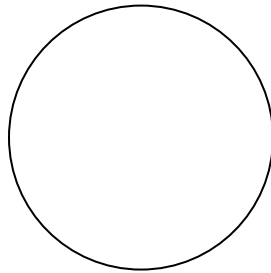
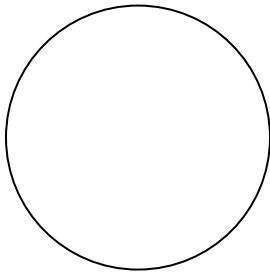


ETHNICITY

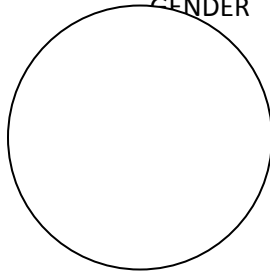
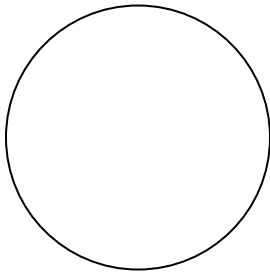
White

Black

Asian and American-Indian



GENDER



Female

U.S. Government Running Portfolio Assignment

Creating Charts

1. Open Excel
2. Type in data as shown in example:

	A	B	C
1	AGE	0-19	20-54
2	Approve	50%	35%
3	Disapprove	15%	15%
4	Strongly Approved	8%	10%
5	Strongly Disapproved	5%	20%
6	Ambiv.	22%	20%
7			

3. Select data from worksheet that you want to include in your chart

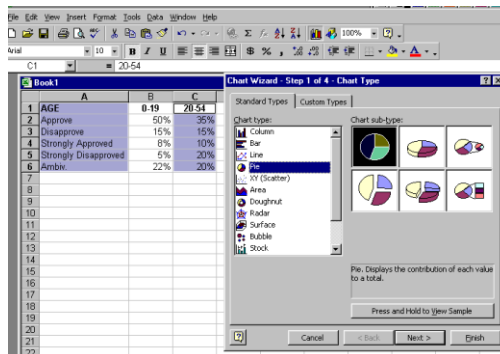
	A	B	C
1	AGE	0-19	20-54
2	Approve	50%	35%
3	Disapprove	15%	15%
4	Strongly Approved	8%	10%
5	Strongly Disapproved	5%	20%
6	Ambiv.	22%	20%
7			
8			

want to include in

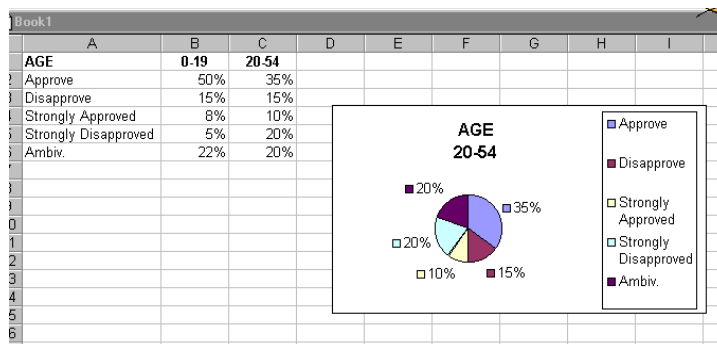
4. Click on Chart Wizard



5. Select type of graph



6. Final Product



U.S. Government Running Portfolio Assignment

Constitution Scavenger Hunt

1. One of your senators dies and you want to be the replacement. To whom do you go? Can you be appointed?
2. A proposed amendment passes Congress with a simple majority. What happens next?
3. You need to find out who voted for a bill in Congress. Where will you go to find this information?
4. Your state wants a regional or district federal court. To whom does the state apply?
5. You have decided California merits four senators. How can this be accomplished?
6. You feel the federal government should protect your town against looters after a terrible hurricane. How can you convince the government it is their duty to do so?
7. Your state wants to abolish the federal kidnapping law, and it passes a law to that effect. How much weight will this law carry?
8. The convict who escaped last Friday has been captured in Mississippi. How does Alabama go about getting him back?
9. Why is your driver license still valid when traveling through Georgia?
10. Two ships collided off the coast of Florida halfway between Palm Springs and Miami. Each sues the other. Where will the case be tried?
11. Puerto Rico wants to become a state. To whom do they address their petition?
12. The Ambassador from Chile is arriving. Who will greet him? If that person is unavailable, then who will greet him?
13. You are so fond of your school day photos that you decide to have them placed on currency. When you try to spend your homemade currency, you are arrested. Who decided this was a crime?
14. A bill lands on the President's desk. He doesn't sign it for ten days. Is it a law?
15. As a senator, you just can't afford to maintain two homes. Can you give up your home in Alabama and move to Washington, D.C.?
16. You've just been elected President. Someone discovers you were born in Canada. Any problems?
17. Your congressman has been so nice to you that you let him use your condo in Florida for the week. Any problems?
18. Congress votes to send all naval ships to the ports of New Orleans and Mobile for refueling. Any problems?
19. You are arrested during a riot. You are not presented with a list of charges. Is this legal?
20. One of your members of Congress simply never shows up for a meeting. Can anything be done before the next election to make this congressional member "shape up"?
21. The Vice President is so upset about a measure that he adds his vote in the Senate. Is this legal?
22. Congress is terribly upset about the President's low pay. They pass a pay increase retroactive to July 1. Any problems?
23. The Governor is so proud of his top 25 residents of Alabama that he gives them a tract of land and the title of "Sir" or "Lady" as the case may be. Any problems?
24. The President is removed from office for taking a bribe. Is that all that legally can be done to him?
25. A senator calls your uncle a scoundrel and a shiftless, no-good drifter while in the middle of a heated debate on the Senate floor. Can you sue?

*Contributed by Mrs. Rhonda Lee, Ramsay High School, Birmingham City Schools